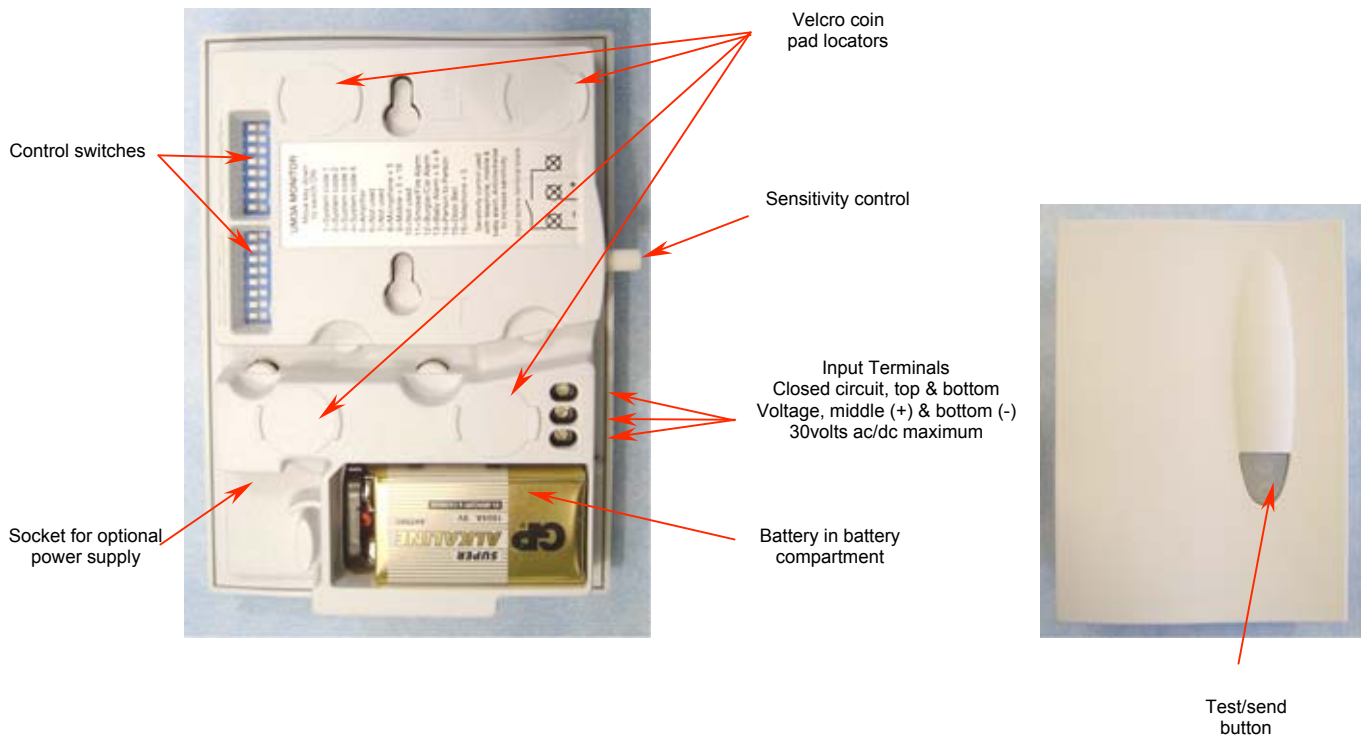


UM3A-2212-EU MKVI Universal Monitor

Part of the SA3000 Paging System for deaf and deaf-blind people



Getting Started

1. Ensure the pager unit is fully charged and either alarm clock charger or trickle charger are installed.
2. Install a 9volt PP3 Alkaline battery and or plug the power supply (sold separately) into a 13amp mains socket.
3. Move one of the control switches (11-16) to the right to determine which signal is sent to the pager (See Table & diagram overleaf).
4. Determine which mode of activation is required. The monitor is activated by sound (using control switches 5 & 8), a short circuit (via the top and bottom input terminals) or a voltage (via the bottom (-) and middle (+) input terminals). Pressing the Test/Send Button also activates the monitor.
5. Test the monitor in location before using either Velcro pads or fixing screws. Do not use Velcro to attach unit to the ceiling.
6. An Alkaline PP3 battery should last one year. Low battery signals will be sent to your pager when the battery needs changing.
7. Control switches 1-4 are for system coding (On to the right) switches 6,7 & 10 are not used and should be left off.
8. The input terminals can be used to connect into Door Bell, Door Entry Phone, Fire, Burglar and Car Alarms plus Door Entry and other systems. When wiring into other systems ensure switches 5 & 8 are in the off (to the left) position & turn sensitivity control off (fully clockwise).

| Sound | Control Switch | Set up | Other Information |
|--------------------------|----------------|---|--|
| Telephone | - | Use the New dedicated plug in type Telephone Monitor | Part number TD3A-2227-UK Telephone Monitor |
| Mobile Telephone | 5, 9 & 16 ON | Place monitor flat on hard surface & mobile telephone flat on monitor. Press test button. | Set sensitivity to half way so as unit activates when telephone rings (anticlockwise = increase) |
| Door Bell / Entry phone | 15 ON | Wire into door chime, bell push or entry phone. Press test button. | Connect the top & bottom terminals to a bell push, use middle and bottom across door chime or entry phone buzzer. |
| Person-Person | 14 ON | Press test button. Give to person being cared for & instruct to press button for | A nurse call button can be connected to the input terminals please contact us for further information. Turn sensitivity off. |
| Baby | 5, 8 & 13 ON | Place near to but out of the reach of your child. Press test button. | Adjust sensitivity so as unit only activates when your child cries. Whistle to check operation (anticlockwise = increase) |
| Car or Burglar Alarm | 12 ON | Wire into car alarm or burglar alarm. Press test button. | Connect middle & bottom terminals to sounder output. Top and bottom terminals can be used for normally open terminals. |
| Smoke / CO or Fire Alarm | 11 ON | Connect to inter connectable Alarm using the middle & bottom terminals. | We can supply Ionisation & Optical inter connectable smoke alarms & inter connectable mains CO detectors. |

DO NOT IMMERSE THE UNIVERSAL MONITOR IN WATER OR ANY OTHER LIQUID. DO NOT SUBJECT THE UNIT TO EXCESSIVE MECHANICAL SHOCK.

UM3A CODE SETTINGS

Baby Set 5, 8 & 13



Car & Burglar Set 12



Doorbell Set 15



Mobile Phone Set 5, 9 & 16



Person to Person Set 14



Smoke, Fire or CO Alarm Set 11

